

Small Hive Beetle identification card

Aethina tumida

EM 9150 ■ July 2016

Oregon State
UNIVERSITY

R. Sagili and C. Breece

The small hive beetle is an invasive and damaging pest of honey bee colonies. It has been occasionally observed in honey bee colonies in Oregon, but no significant damage from this beetle has yet been reported. It is not clear whether this beetle can thrive in Oregon's soil and climatic conditions. Early detection, reporting, and monitoring of small hive beetle may help mitigate its establishment in this region.

Keep small hive beetle OUT of Oregon!
Learn them, watch for them, and report them!

The adults are:

- brown to black in color
- oval shaped
- about ¼ inch (5.7 mm) long (about one-third the size of a honey bee)
- stout, squat in shape
- lacking additional elongated segments

Where to find them:

- Cracks and crevices in colony
- Weak colonies
- Honey houses with stored honey supers
- Protein patties



Chris Hedstrom, Oregon
Department of Agriculture



James D. Ellis, University of
Florida © Bugwood.org
/CC-BY-3.0-US



3.0 mm

Chris Hedstrom, Oregon
Department of Agriculture

FOLD

Small Hive Beetle: Some common lookalikes

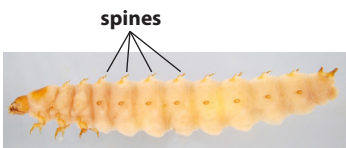
Small hive beetle larvae may resemble greater wax moth larvae (*Galleria mellonella*).

Greater wax moth larva:
no spines, has prolegs



prolegs

Small hive beetle larva:
spines, no prolegs



spines



Rove beetle



1.5 mm

Chris Hedstrom, Oregon
Department of Agriculture

Sap beetle

Prevent SHB establishment!

- Keep strong colonies
- Promptly remove deadouts
- Extract honey immediately after harvest
- Do not feed protein patties during almond pollination
- Carefully inspect packages, nucs, and queens purchased from areas with established SHB
- Watch for them, report them if you find them.

For more information:

The Small Hive Beetle: A Potential Pest in Honey Bee Colonies in Oregon (EM 9143)

To report a sighting:

Oregon State University Honey Bee Lab
4017 ALS Building
Corvallis, OR 97331
Phone: 541-737-1447
honeybeelab.oregonstate.edu