

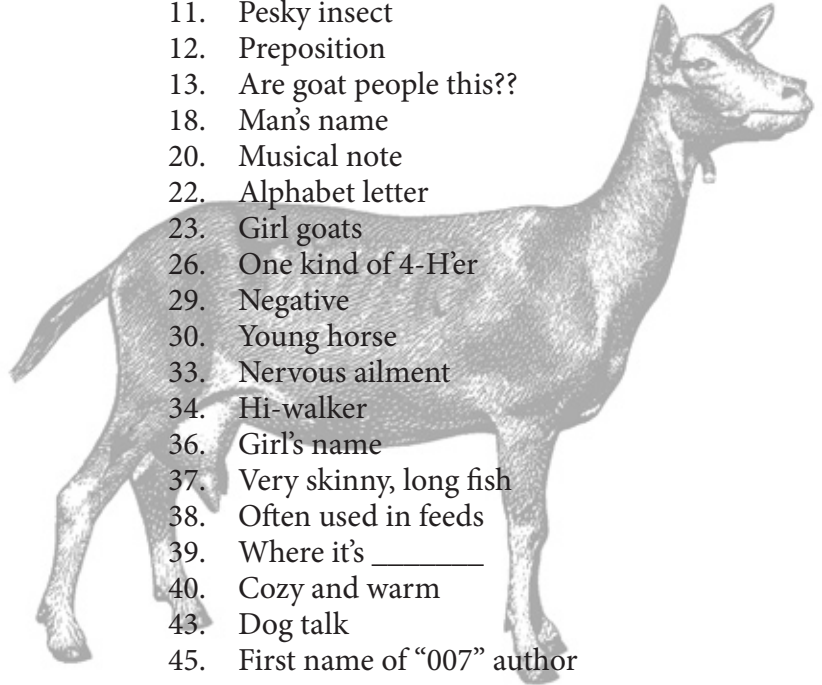
# 4-H Dairy Goat Crossword Puzzle

## Across

1. Breed from Africa/England
7. 5 months or 150 days
15. Abbreviation for registered
16. You may need one to start
17. Soft, fluffy hair
19. This brings up the rear
21. Cartoon goats did this a lot
24. Preposition
25. Oats come in it
26. It holds the stanchion lever
27. Goats chew on this kind of tree
28. Need this to tattoo
30. This animal also gives milk
31. Either... \_\_\_\_
32. On the hoof
33. No goat should be this
34. It's \_\_\_\_ nice!
35. Papa goat
38. Measurement of thickness
39. Preposition
40. You don't say
41. Goats' favorite preposition
42. Milking period
44. Need this to milk
46. The real cream
47. These are important for nutrition

## Down

1. Science of feeding
3. Near the chest
5. Abbreviation for Advanced Registry
6. This gets stuck out a lot
8. Top of foreleg
9. Most goats have it
10. Permanent mark for registry
11. Pesky insect
12. Preposition
13. Are goat people this??
18. Man's name
20. Musical note
22. Alphabet letter
23. Girl goats
26. One kind of 4-H'er
29. Negative
30. Young horse
33. Nervous ailment
34. Hi-walker
36. Girl's name
37. Very skinny, long fish
38. Often used in feeds
39. Where it's \_\_\_\_\_
40. Cozy and warm
43. Dog talk
45. First name of "007" author



1	2	3	4	5	6		7	8	9	10	11			12	13	
14				15				16						17		18
19			20					21				22	23		24	
		25					26					27				
28	29					30				31						
32					33				34				35	36		37
				38				39			40					
41			42				43						44		45	
	46										47					

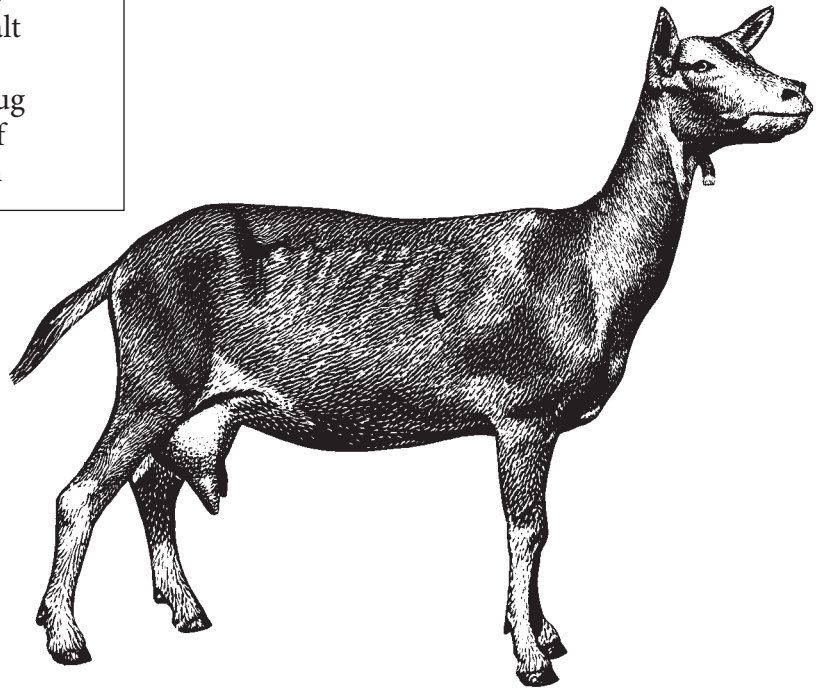
# 4-H Dairy Goat Crossword Puzzle Answer Page

## Across

1. Nubian
7. Gestation
15. Reg
16. Loan
17. Fur
19. Tail
21. Butted
24. To
25. Sack
26. Bolt
27. Mossy
28. Ink
30. Cow
31. Or
32. Toes
33. Toy
34. So
35. Sire
38. Mil
39. At
40. So
41. On
42. Lactation
44. Pail
46. Butterfat
47. Grains

## Down

1. Nutrition
3. Brisket
5. AR
6. Neck
8. Elbow
9. Soul
10. Tattoo
11. Ant
12. Of
13. Nuts
18. Roy
20. La
22. Em
23. Does
26. Boy
29. No
30. Colt
33. Tic
34. Stilt
36. Ida
37. Eel
38. Malt
39. At
40. Snug
43. Arf
45. Ian



*Prepared by Pat Schulthess, 4-H leader*

This publication may be photocopied or reprinted in its entirety for noncommercial purposes.

This publication was produced and distributed in furtherance of the Acts of Congress of May 8 and June 30, 1914. Extension work is a cooperative program of Oregon State University, the U.S. Department of Agriculture, and Oregon counties.

Oregon State University Extension Service offers educational programs, activities, and materials without discrimination based on age, color, disability, gender identity or expression, marital status, national origin, race, religion, sex, sexual orientation, or veteran's status. Oregon State University Extension Service is an Equal Opportunity Employer.

Reprinted November 2007.